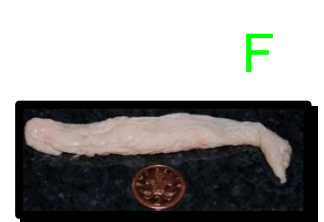
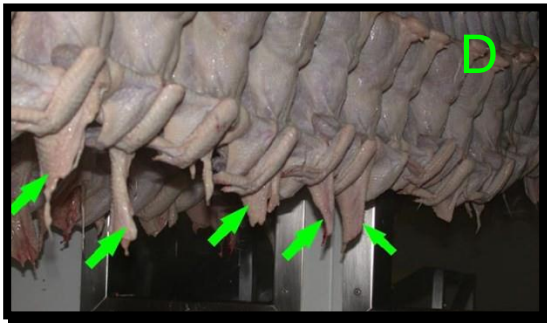
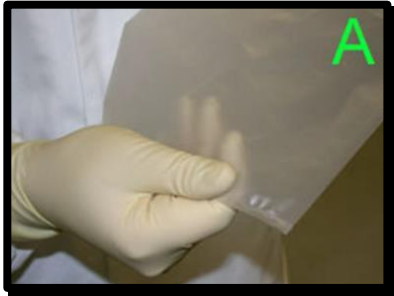


# Campylobacter sampling in broiler carcasses under the Food Process Hygiene Criteria

Regulation (EC) 2073/2005 (as amended)

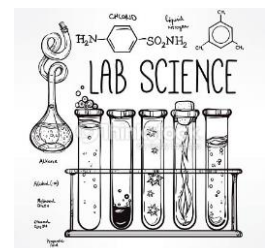
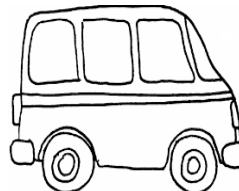
## Sampling method



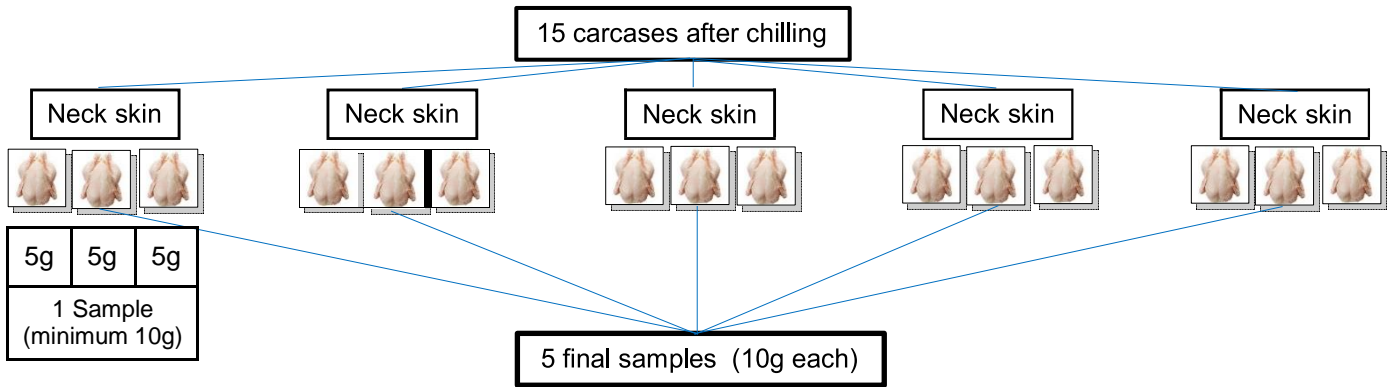
- A. Put on pair of gloves then wipe the surfaces of the gloves with alcohol wipes to kill any bacteria that may be present.
- B. Wipe the scissors with an alcohol wipe.
- C. Grip the plastic bag at the bottom and fold back over the gloved hand. Avoid the internal surface of the bag or the scissors contacting other surfaces.
- D. Grasp the neck skin through the bag and cut off the required amount (see charts on next page for sizes, numbers and handling of the samples).
- E. Fold the bag back over the sample and tie to secure the neck skin samples inside.
- F. Clean gloves and scissors with alcohol wipes and repeat.
- G. Apply identification label to the pack.
- H. Refrigerate if not transferred to the lab within 2 hours at a temperature between 1°C and 8°C (not freezing as this kills Campylobacter).
- I. Testing to commence within 48 hours of sampling.

### Identification label

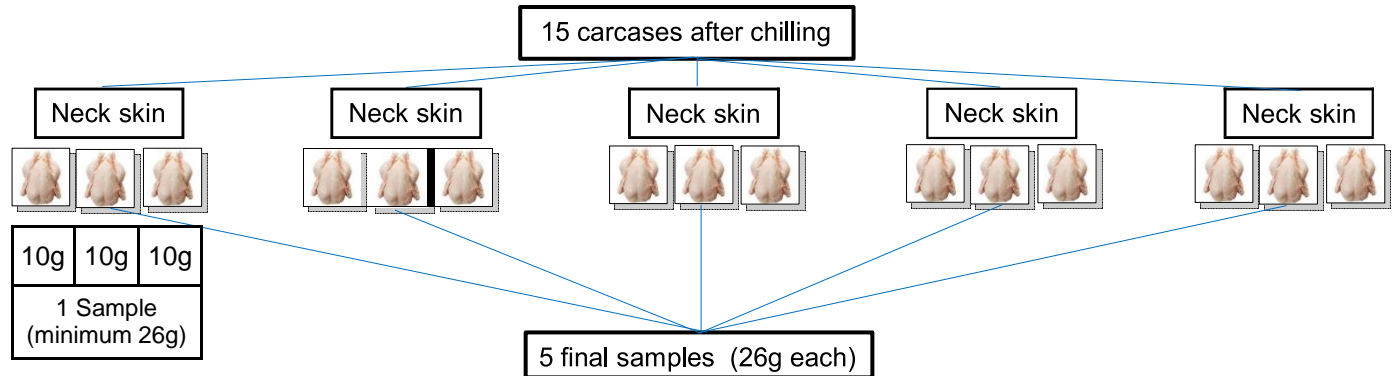
- Date/time of sampling
- Species
- To test for: Campylobacter/ Salmonella
- Origin of birds (farm details)



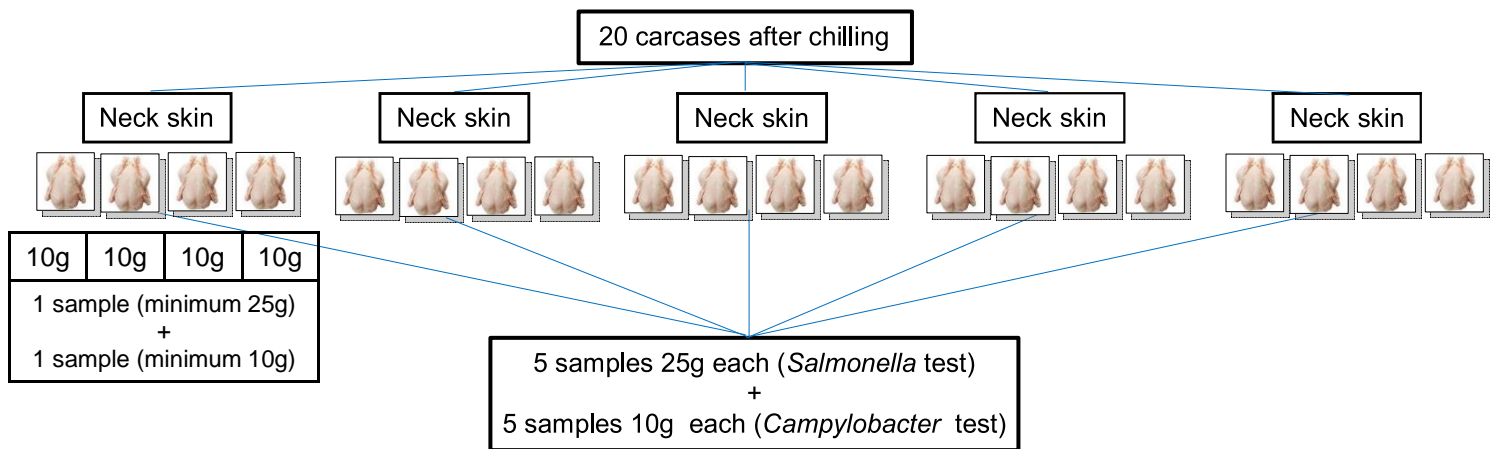
### Option 1. *Campylobacter* testing only



### Option 2. *Salmonella* and *Campylobacter* testing - in the same laboratory



### Option 3. *Salmonella* and *Campylobacter* testing - in different laboratories



### Result analysis and sampling frequencies

Sampling	Satisfactory results (moving windows 50 samples on 10 continuous weeks)	Sampling frequencies	
		Initial frequency	Reduced frequency (if results are satisfactory. If unsatisfactory revert to initial frequency)
All abattoirs	<p><b>The maximum limit is 1000 cfu/g</b>  <b>From 1st January 2018</b>                      &gt;1000cfu/g in up to a maximum of 20 out of 50 samples</p> <p><b>From 1st January 2020</b>                      &gt;1000cfu/g in up to a maximum of 15 out of 50 samples</p> <p><b>From 1st January 2025</b>                      &gt;1000cfu/g in up to a maximum of 10 out of 50 samples</p>	<p><b>Campylobacter</b>  <i>(only for broilers):</i></p> <p>5 samples once a week for 52 weeks                      (52 x 5 = 260 samples)</p>	<p><b>Campylobacter</b>  <i>(only for broilers):</i></p> <p>5 samples once every 2 weeks</p>